

INSERT A 4M  
CUT A "V"



MM (.156") CARBON FIBER TUBE 36" LONG  
GROOVE AND GLUE FLUSH WITH SURFA

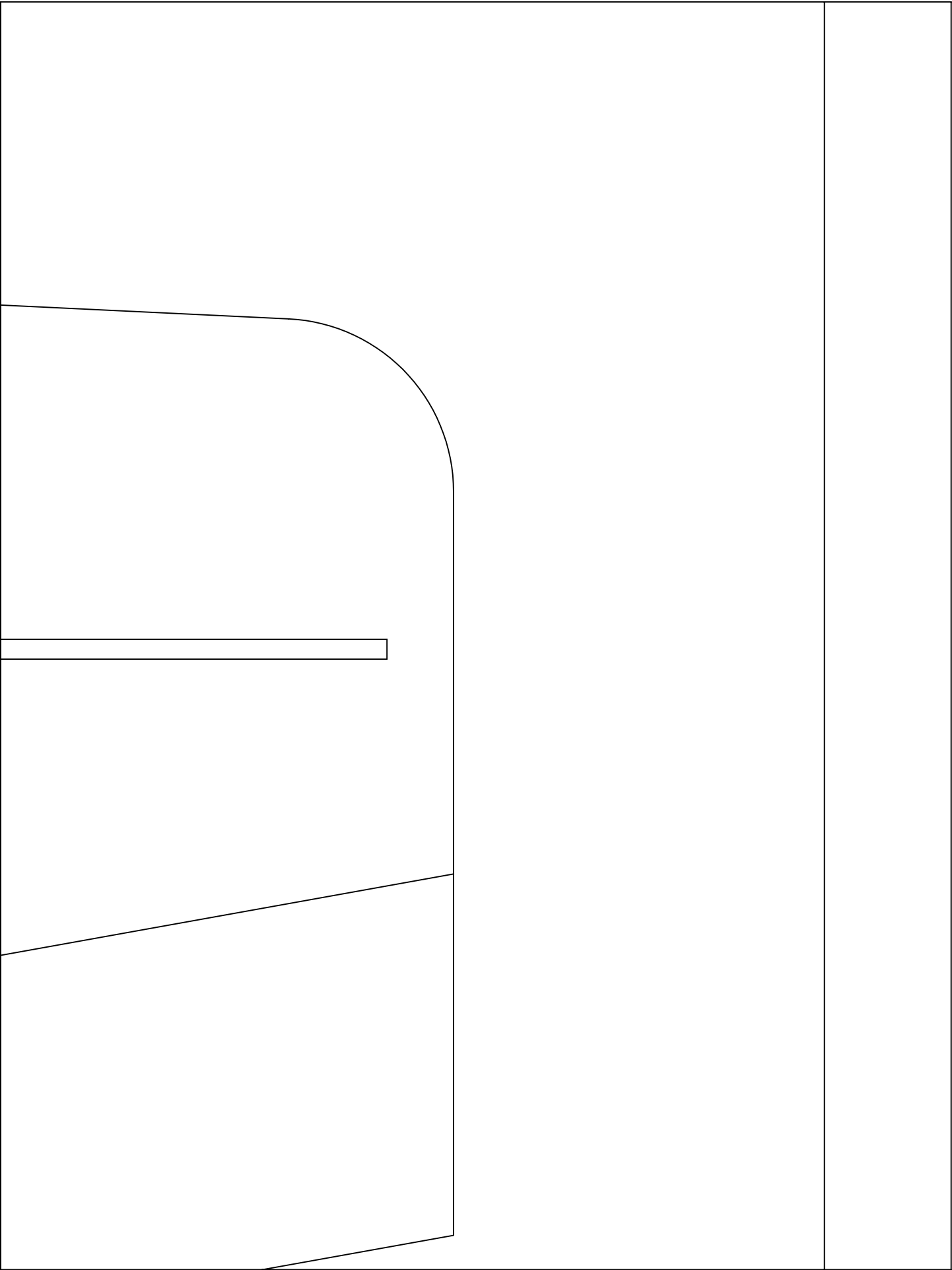
AILERON HINGE LINE



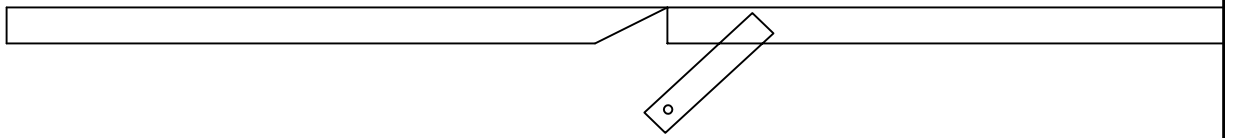


A diagram showing the bottom surface profile of a wing. The profile is a single line that starts at a certain height on the left, slopes slightly downward to the right, then slopes upward to the right, and finally levels off to the right. The text 'E ON BOTTOM SIDE OF WING.' is written in a monospaced font across the middle of the diagram.

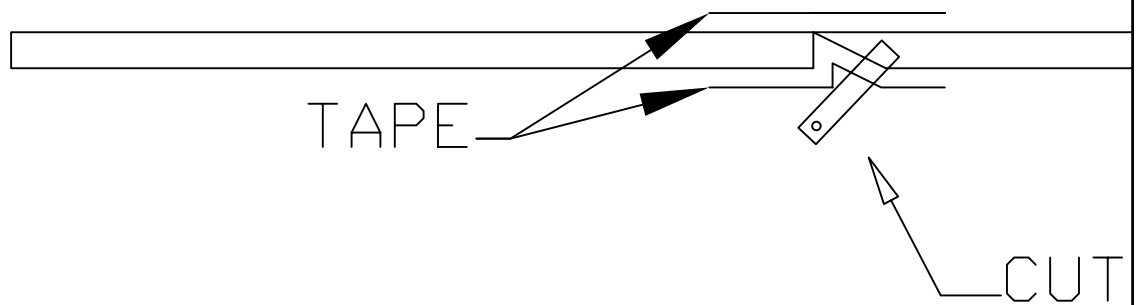
E ON BOTTOM SIDE OF WING.



FOR THE ELEVATOR HINGE, BEVEL  
STABILIZER, NOT THE ELEVATOR.



BEVEL RUDDER & AILERONS LIKE T  
TAPE BOTH SIDES OF ALL SURFACE





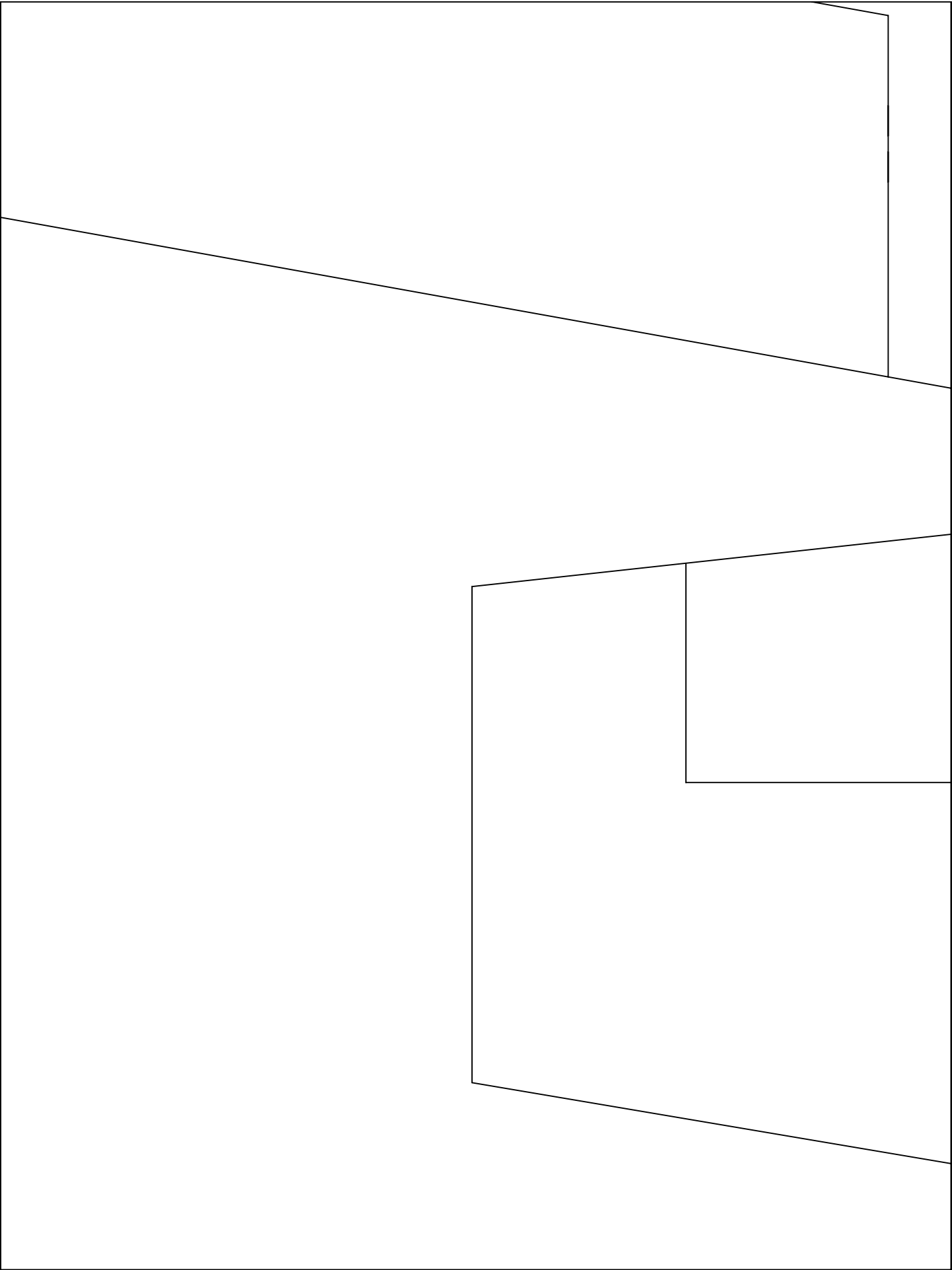
THE HORIZONTAL



HIS, USE TAPE HINGES.  
S.

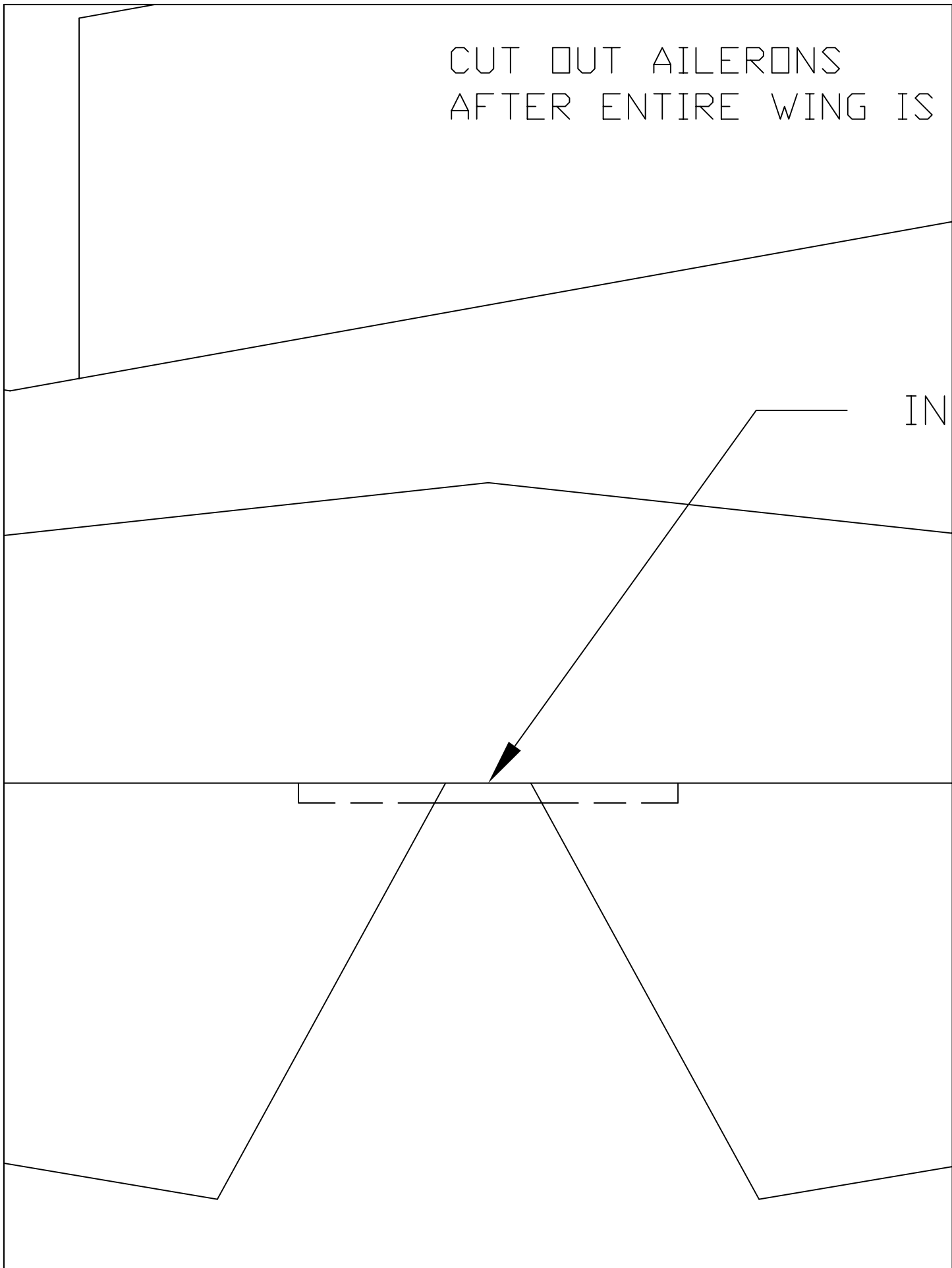


DOWN ZIP TIE FOR CONTROL HORNS



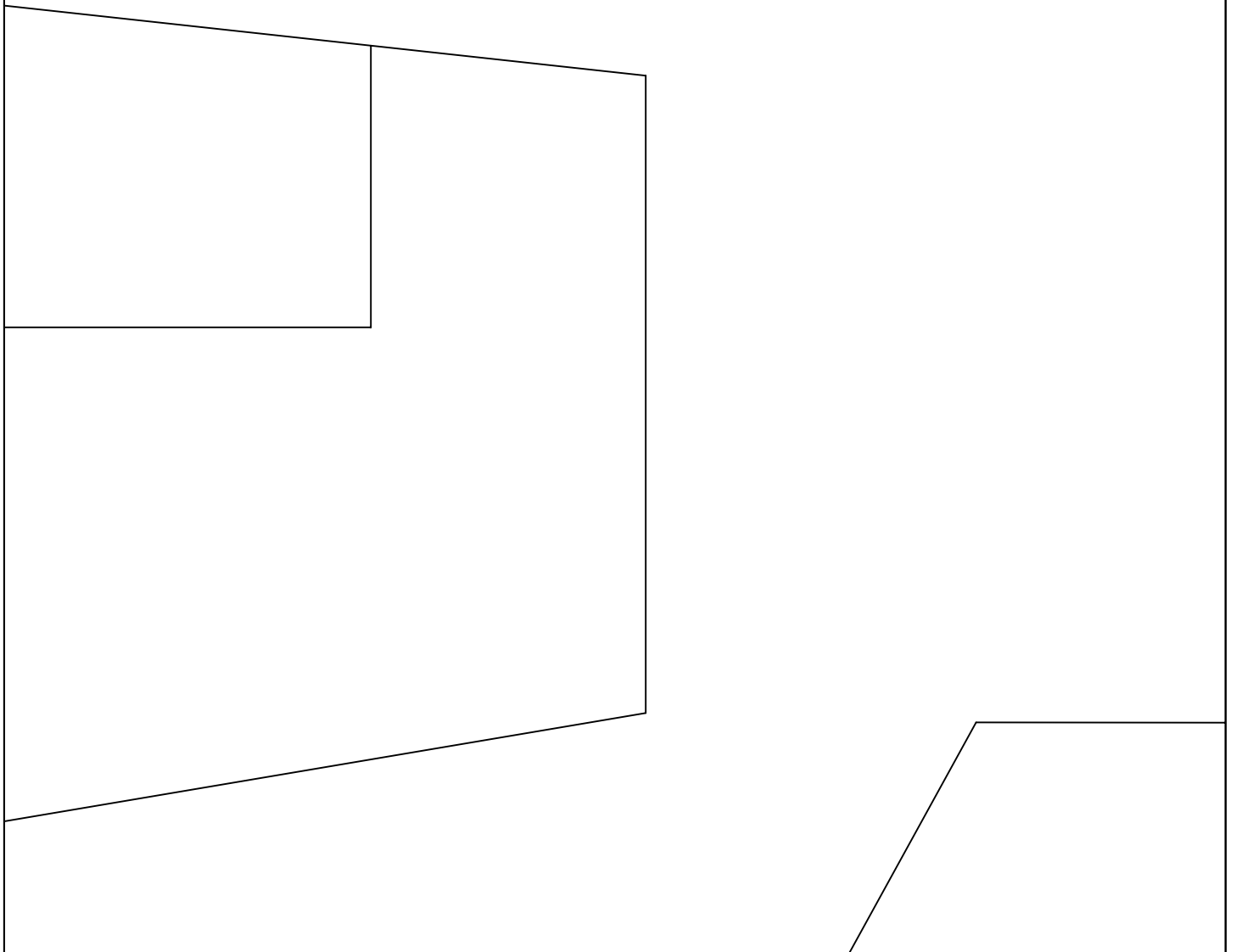
CUT OUT AILERONS  
AFTER ENTIRE WING IS

IN



CUT OUT

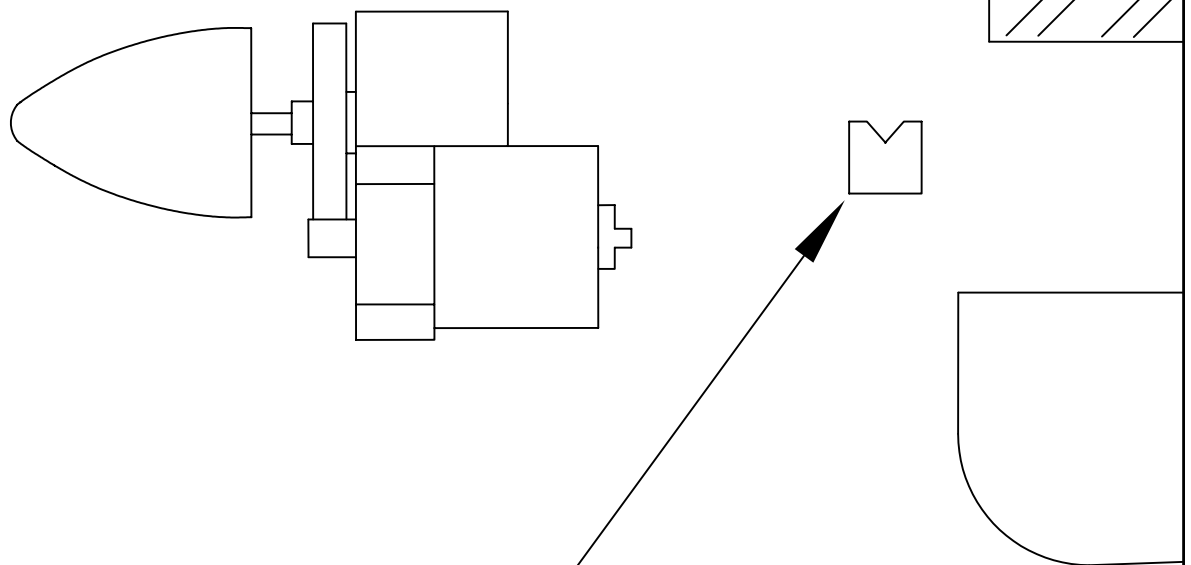
INSERT A 4MM (.156") CARBON FIBER TUBE



3" LONG.

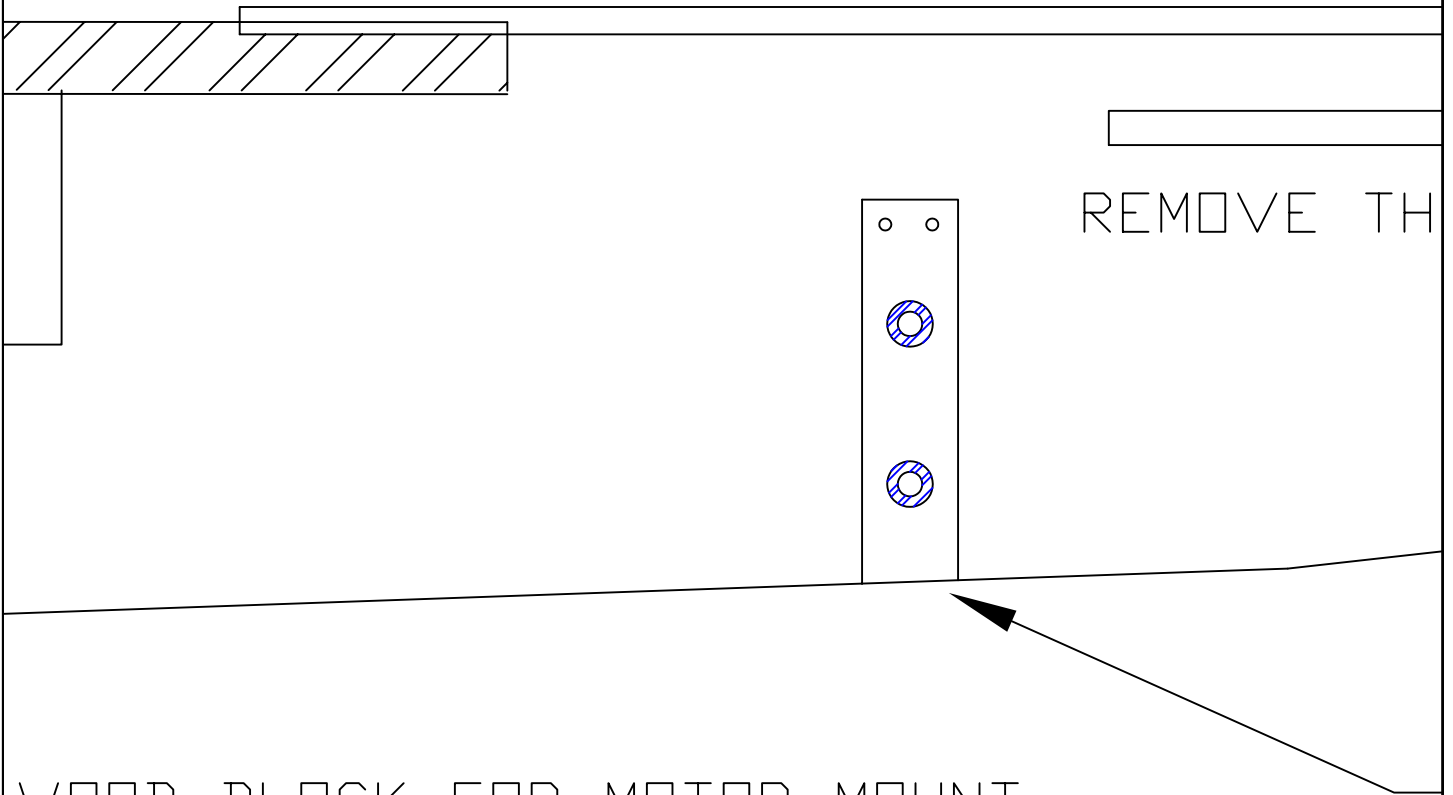
NOTE: CUT-OUT IN FUSELAGE IS  
GWS EPC 350-C GEARBOX AND MO  
IF YOU ARE USING ANOTHER POW  
ADJUST CUT-OUT AS REQUIRED.

GWS 350-C GEARBOX SHOWN.



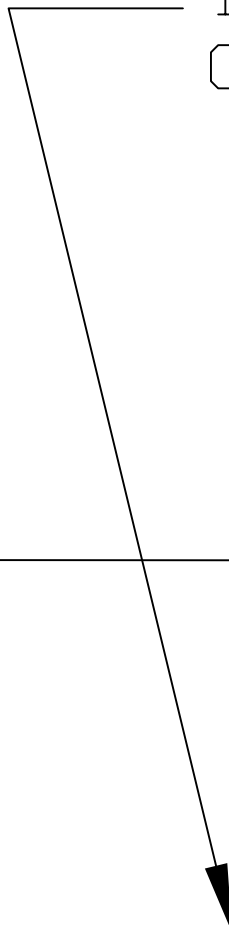
USE 3/8" SQ. HARD  
CUT "V" NOTCH IN

SHOWN FOR  
TOR.  
ER SYSTEM,

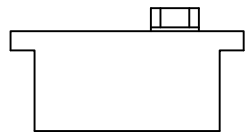


WOOD BLOCK FOR MOTOR MOUNT  
BLOCK TO INSERT CARBON FIBER TUBE

INSERT A 4MM (.156") CARBON F  
CUT A "V" GROOVE AND GLUE F

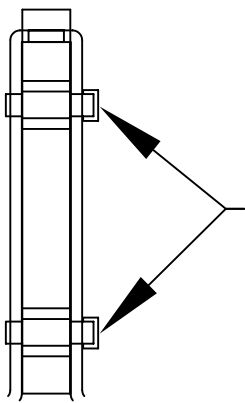
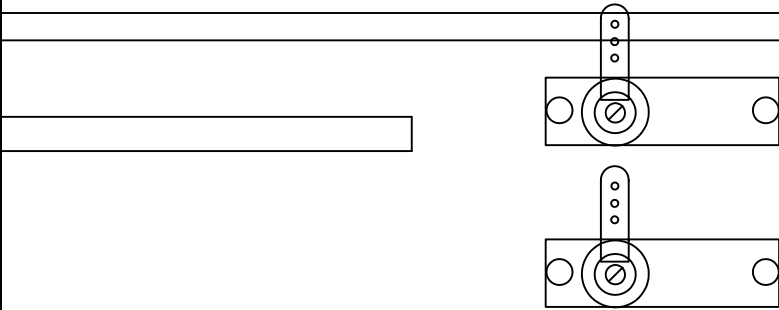
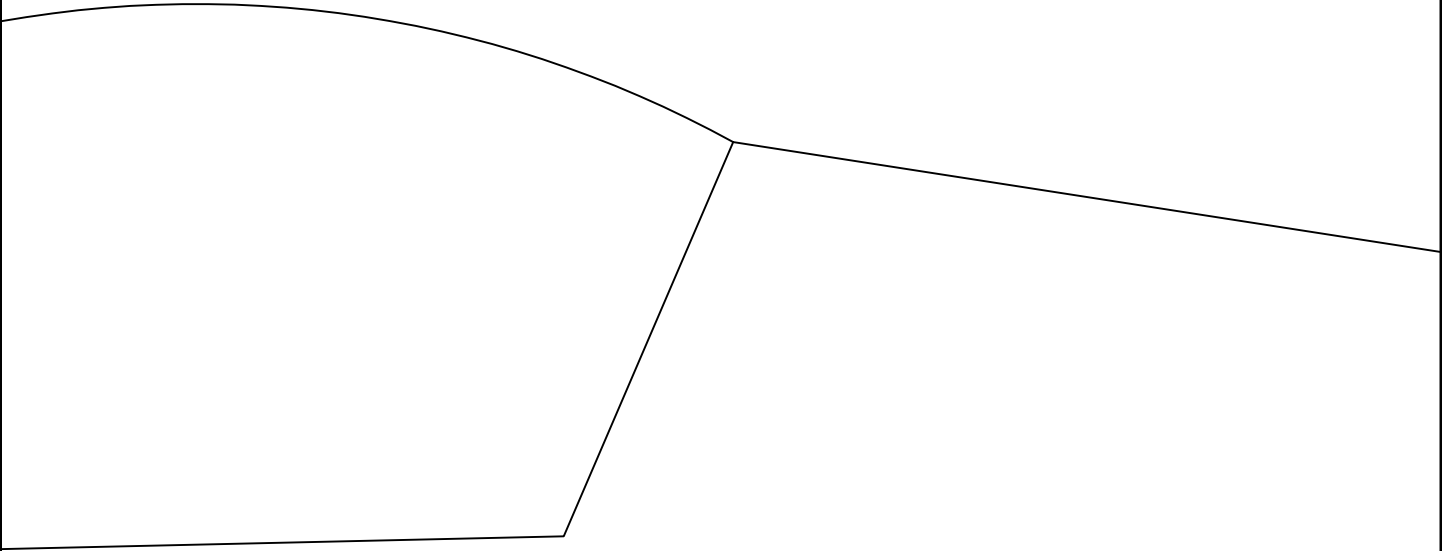


IS AREA



SEE LANDING GEAR DETAIL.

IBER TUBE 27-1/4" LONG.  
LUSH WITH SURFACE ON THIS SIDE OF



1/8" Wire Tie  
(2 REQ.)

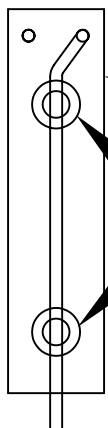
FUSE.

CUT RUDDER OUT  
ENTIRE FUSELAGE I

REMOVE THIS AREA



2.0000

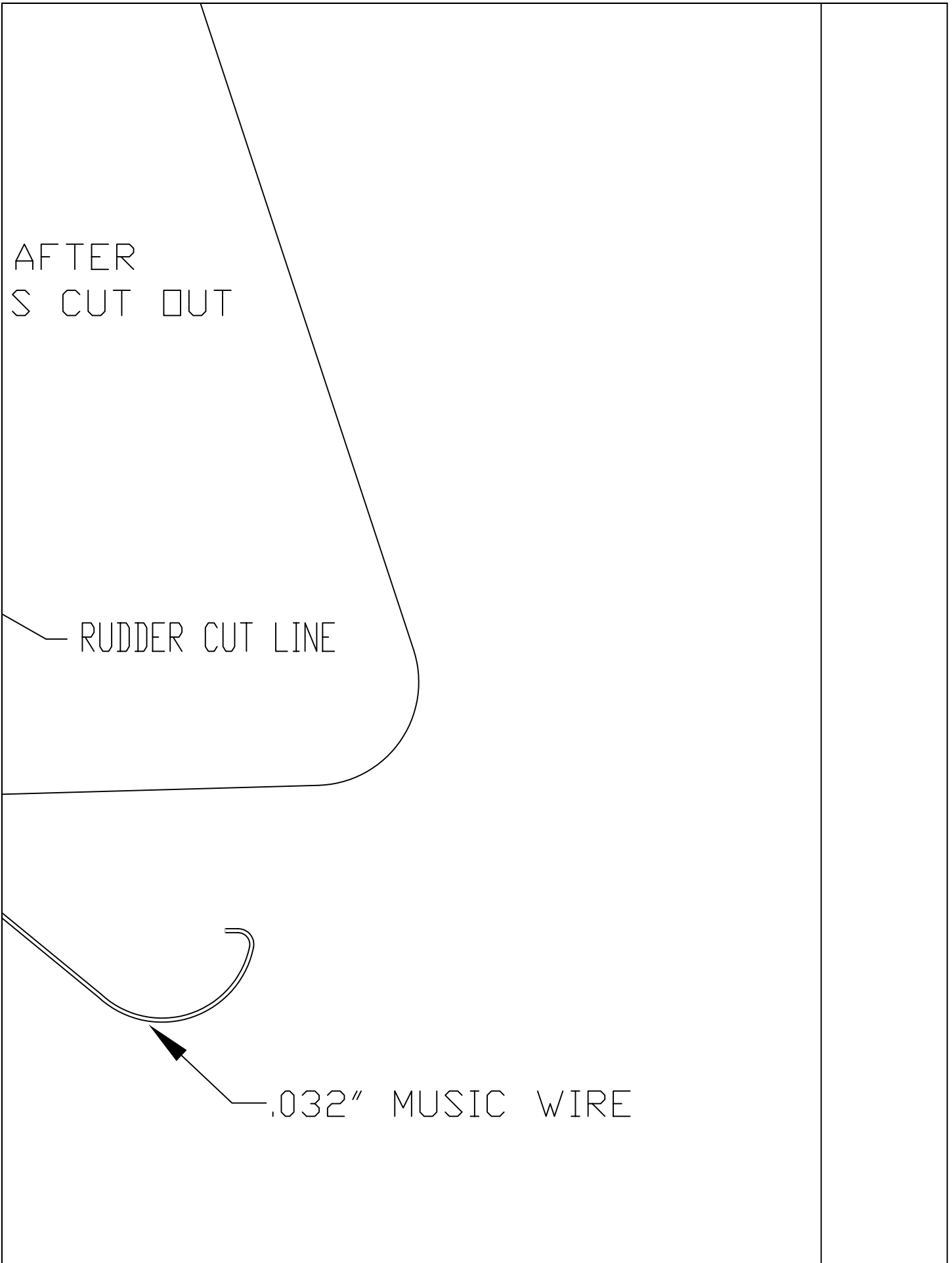


1/4" x 1/2" Hardwood Block  
1/4" Fuel Tubing (2 PLC.)

AFTER  
S CUT OUT

RUDDER CUT LINE

.032" MUSIC WIRE



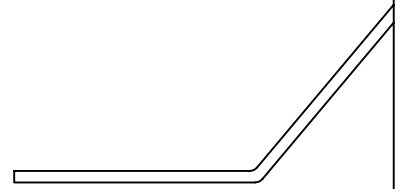
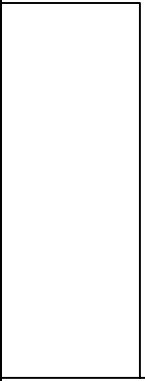
EPOXY THE BLOCK

NOTE: MATERIAL FOR ENTIR  
FAN FOLD FOAM (FFF) SUC

TO THE CARBON FIBER TUBE.

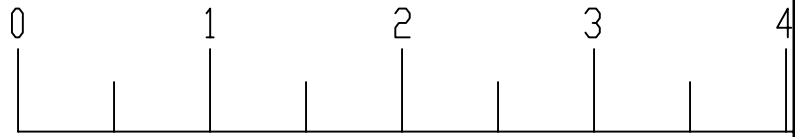
E PLANE IS 6MM DEPRON O  
H AS DOW BLUECORE.

.062" Music Wire



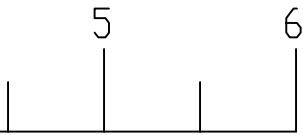


Landing Gear  
Detail



SCALE REF.

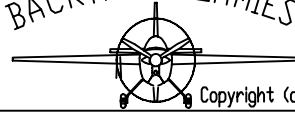
# SU-31



DESIGNED AND DRAWN BY:

R.MILLER  
R.WISHON

BACKYARD FOAMIES



Copyright (c) 2003

Wing Span= 37.0"

Wing Area= 345 sq. In.

Power= GWS 350

Prop= 12 x 6